

Jimmy **Giuffre**

SKETCH-ORKS

DESIGNED FOR SMALL GROUPS

*Contains melody and counter melody
for Eb and Bb instruments.*

Chords and rhythm indication.



BALLADE

THE LEPRECHAUN

LAZY TONES

LA SONCALLI

SAFARI

FOUR OTHER (LIGHTHOUSE)

THE DUKE

BIG GIRL

A RING-TAIL MONKEY

LAVENDER

FOUR MOTHERS

DO IT

DRUM STICKS

FAST CLIP

JOLLY JUMPS IN

THE HORNS

SCINTILLA I

SCINTILLA IV

ALL FOR YOU

NUTTY PINE

SCARF DANCE

IRANIC

FINGER-SNAPPER

CHIRPIN' TIME

ONE SCORE & 8 HORNS AGO

OUT OF SOMEWHERE

CREME DE MENTHE

PRICE
IN USA **\$5.95**

CRITERION MUSIC CORP.

Sole Selling Agent:

JOE GOLDFEDER MUSIC ENTERPRISES

P.O. BOX 660,

INSTRUCTIONS

- I. KEY (Lead plays stems up - Counter melody plays stems down.)
 - A. This book is in the **concert key** (oboe, piano, violin, flute).
 - B. Transpositions
 1. Bb trumpet and Bb clarinet — up 1 whole tone.
 2. Bb tenor saxophone — up a major ninth.
 3. Eb alto saxophone — up a major sixth.
 4. Eb baritone saxophone — up a major 6th and an 8 va.
 5. Concert bass clef (trombone, cello) — up a minor 6th and an 8 va. Change key signature to bass clef by lowering each accidental (in the signature) to the next line or space below its present position
 6. Bass violin is the same as the above and another 8 va higher.
 7. French horn in F — up a perfect 5th.
 - C. These tunes are written here in the original recorded key. It may be advantageous (for certain instrumentations) to change the key.
- II. On all the tunes, do not take the coda sign until after the last chorus.
- III. When an accent mark appears below a slur-mark, this calls for the legato-tongue to be used without breaking the slur.
- IV. Special instructions for rhythm section, drums, etc. appear at the end of each tune.
- V. On the longer tunes, if the regular 32-bar chorus is desired for solos, delete the circled bar.

JIMMY GIUFFRE is a quiet and intense young man with a singular creative touch. He has written and played for Woody Herman, Boyd Raeburn, Buddy Rich, Jerry Gray, Stan Kenton, and many more of the nation's leading bandmen.

Jimmy has been playing clarinet and tenor sax since he was a lad in Texas, and he approaches composition most naturally as a performer. His work is generally melodic and "linear" in character. "This style of writing," he says, "gives the players the feeling of individuality that's so important to jazz. Besides, I think it gives the listener more variety. I also use less rhythm section than is usual because I believe that this, too, provides more clarity and less monotony."

Jimmy **Guffre**

SKETCH-ORKS

DESIGNED FOR SMALL GROUPS

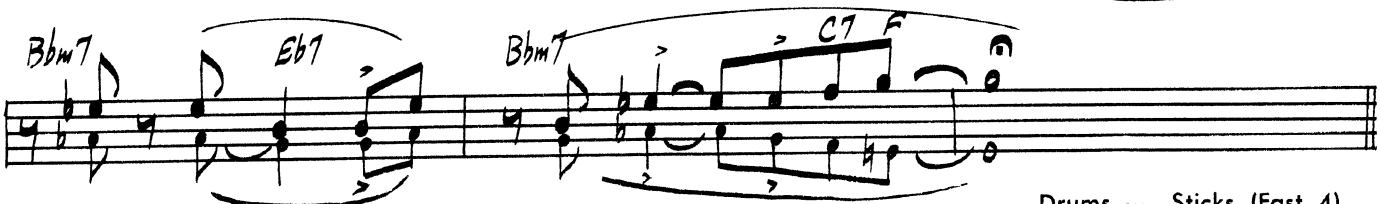
Contains melody and counter melody
for Eb and Bb instruments.
Chords and rhythm indication.

Title	<i>Contents</i>	PAGE
ALL FOR YOU		10
BALLADE		27
BIG GIRL		24
CHIRPIN' TIME		32
CREME DE MENTHE ✓		5
DO IT		4
DRUM STICKS		8
THE DUKE		23
FAST CLIP		6
FINGER-SNAPPER		31
FOUR MOTHERS		2
FOUR OTHER (LIGHTHOUSE)		22
THE HORNS		30
IRANIC		19
JOLLY JUMPS IN		29
LA SONCALLI		20
LAVENDER		18
LAZY TONES		16
THE LEPRECHAUN		28
NUTTY PINE		3
ONE SCORE & 8 HORNS AGO		33
OUT OF SOMEWHERE ✓		34
A RING-TAIL MONKEY		25
SAFARI ✓		21
SCARF DANCE		26
SCINTILLA I		12
SCINTILLA IV		14

FOUR MOTHERS

Recorded by

Shorty Rogers (Capitol)



Drums — Sticks (Fast 4)

NUTTY PINE

Recorded by
Jimmy Giuffre (Capitol)

[illegible]

Drums — Brushes (in 4)

MEDIUM BRIGHT

DO IT

Handwritten musical score for "DO IT" by Jimmy Giuffre. The score is written on ten staves in treble clef with a key signature of one sharp (F#). It includes various musical notations such as notes, rests, and dynamic markings like "p." and "f.". Chord symbols are written above the staves, including Am7, D7, Fm7, Bb9, Bb7, Eb, Bm7, E7, G, Bbm7, Eb7, Cm7, F7, Ab, Fm7, Ab7, Db, Cm7, Bm7, E7, Am7, D7, Fm7, Bb9, Bb7, Eb, Am7, D7, G, and Am7. The score concludes with a "CODA" section and a handwritten note "OPT. D.S. FOR SOLOS".

Drums — Sticks (in 4)

Rhythm section plays on 2 & 4 during 1st 4 of 1st 8 bars,
2nd 8, last 8, and last part of coda.

By Jimmy Giuffre

CREME DE MENTHE

Recorded by
Lighthouse All-Stars
(Contemporary)

CODA

Drums — Sticks (in 4)

FAST CLIP

Recorded by
Stan Levey (Bethlehem)

Handwritten musical score for "Fast Clip" by Jimmy Giuffre, recorded by Stan Levey. The score is written on ten staves in treble clef with a key signature of one flat (Bb). It includes various musical notations such as notes, rests, and accidentals, along with handwritten chord symbols like F, Fm, F7, D7, C7, Gm7, G7, C+7, Gb7, and Fmi. The piece concludes with an "ENDING" section marked with a double bar line and a repeat sign.

Handwritten musical score for five staves in B-flat major. The notation includes various chords and melodic lines with slurs and accents.

- Staff 1:** Chords: Fm, Fm, Fm.
- Staff 2:** Chords: Fm, F, F, D7.
- Staff 3:** Chords: D7, Gm7, C7, Gm7.
- Staff 4:** Chords: C7, F, F.
- Staff 5:** Chords: G7, C7, C+7, C7, F.

At the end of the fifth staff, there is a boxed instruction: **[OPT D.S. For solos]**.

Handwritten musical score for a CODA section on a single staff. The notation includes chords and melodic lines.

CODA

- Chords: C+7, C7, Fm.

Drums — Sticks
(VERY FAST) (in 4 or 2)

Handwritten musical score for "Drum Sticks" by Jimmy Giuffre. The score is written on ten staves, each containing musical notation and handwritten chord symbols. The notation includes eighth and sixteenth notes, rests, and bar lines. The chords are written in a handwritten style, often with a slash and a flat sign for minor chords. The score is organized into measures, with some measures containing multiple notes and others being rests. The overall style is that of a working manuscript, with some corrections and annotations visible.

Chord symbols and notation visible in the score include:

- Dm
- $Em7(b5)$
- $A7$
- F
- $Bb7$
- $Gm7$
- $C7$
- $Fm7$

Handwritten musical score for guitar, featuring ten staves of music. The notation includes chords, melodic lines, and rhythmic markings.

Chords and Harmonies:

- $E_m7(b5)$
- $A7$
- Dm
- $Gm7$
- $C7$
- $Bb7$
- F

Other Markings:

- Arrows indicating melodic movement.
- Accents ($>$) over notes.
- Bar lines and repeat signs.
- A double bar line with a cross symbol (Coda symbol).

Section Labels:

- CODA** (written vertically on the left side of the 9th staff).
- OPT. D.S. FOR SOLOS** (written on the right side of the 8th staff).

The score concludes with a final melodic phrase on the 10th staff, ending with a double bar line.

By Jimmy Giuffre

ALL FOR YOU

Recorded by
Jimmy Giuffre (Capitol)

SLOWLY

Handwritten musical score for "All for You" by Jimmy Giuffre. The score is written on ten staves, featuring complex rhythmic patterns, triplets, and various chord markings. The tempo is marked "SLOWLY".

Chord markings include: F7, Bbm7, Eb7, Ab, Bbm7, Cm7, Bbm7, Dbm7, Gb7, Eb7, Ab7, Dbm7, Gb7, Cm7, F7, Bbm7, Eb7, Ab7, Bbm7, Eb7, Ab.

Handwritten musical score for five staves. The notation includes various chords and melodic lines.

Staff 1: *Bbm7* (chord), *Cm7* (chord)

Staff 2: *F7* (chord), *Bbm7* (chord)

Staff 3: *Dbm7* (chord), *Gb7* (chord), *Cm7* (chord), *F7* (chord)

Staff 4: *Bbm7* (chord), *Eb7* (chord), *Ab* (chord)

Staff 5: *Cm7* (chord), *F7* (chord), *OPT. D.S. FOR SOLOS* (text)

Handwritten musical score for two staves, including a Coda section and a Horns Alone section.

Staff 1: *CODA* (text), *Eb7* (chord), *HORNS ALONE* (text)

Staff 2: *Ab6* (chord)

SCINTILLA I

Recorded by Jimmy Giuffre (Capitol)

Handwritten musical score for "SCINTILLA I" by Jimmy Giuffre. The score is written on ten staves, featuring various chords and melodic lines. The key signature is E-flat major (three flats). The chords and melodic fragments are as follows:

- Staff 1: E^b , $Gm7(b5)$, $C7$, $Fm7(b5)$, $Bb7$
- Staff 2: E^b , $Ebm7$, $Ebm6$
- Staff 3: $B7$, $Bb7$, E^b , $(FOR SOLOS) Bb7$, $Fm7(b5)$
- Staff 4: $Bb7$, $Fm7(b5)$, $Bb7$, $Bb7$
- Staff 5: E^b , $Gm7(b5)$, $C7$, $Fm7(b5)$, $Bb7$
- Staff 6: E^b , $Ebm7$, $Ebm6$, $B7$, $Bb7$
- Staff 7: E^b , $Fm7$, $Bb7$, E^b
- Staff 8: E^b , $Ebm7$, $Ebm7$
- Staff 9: $Ebm7$, $Ebm7$, $Ebm7$
- Staff 10: $Ebm(+5)$, $Ebm7$, $Ebm7$

Handwritten musical score for drums, featuring ten staves of notation. The score includes various chords and melodic lines, with some sections marked for deletion.

Chords and Notation:

- Staff 1: Ebm, Ebm, Bb7
- Staff 2: Bb7, Fm7(b5), Ebm, Ebo7
- Staff 3: Bb7, Bb7, (Fm7), Bb7
- Staff 4: Eb, Gm7(b5), C7, Fm7(b5), Bb7, Eb
- Staff 5: Fm7(b5), Bb7, Fm7(b5), Bb7, Bb7
- Staff 6: Ebm7, Ebm6, Ebm7
- Staff 7: Em6, Fm7(b5), Bb7
- Staff 8: Fm7(b5), Bb7, Fm7(b5)
- Staff 9: Bb7, Fm7(b5), Bb7, Eb, Bb7
- Staff 10: CODA, Fm7(b5), Bb7, Eb

Additional Markings:

- Staff 9: OPT. D.S. FOR SOLOS
- Staff 10: Delete circled bars

Drums — Sticks (Fast 4)

SCINTILLA IV

Recorded by Jimmy Giuffre (Capitol)

BRIGHT

Handwritten musical score for "SCINTILLA IV" by Jimmy Giuffre. The score is written on ten staves in treble clef with a key signature of two flats (Bb, Eb) and a common time signature (C). The music features various chords and melodic lines. Chords are labeled with handwritten text: Bb7, Eb, Fm7, Eb (add Gb), Bb7, Eb, Fm7, Bb7, Eb, Fm7, Bb7, Eb, Ebm, Ebm, Ebm, Ebm, Ebm, Ebm, Ebm, Ebm, Ebm, Ebm. The score includes a repeat sign with first and second endings. The first ending is marked "1. Fm7 Bb7" and the second ending is marked "2. Eb". The score is written in a handwritten style with various musical notations including notes, rests, and accidentals.

Handwritten musical score for a 32-bar chorus. The score consists of five staves. The first staff has a treble clef and a key signature of two flats (Bb, Eb). The notes are: Eb (half), Bb (quarter), Eb (quarter), Bb (quarter), Eb (half). The second staff has a bass clef and notes: Eb (half), Bb (quarter), Eb (quarter), Bb (quarter), Eb (half). The third staff has a treble clef and notes: Eb (half), Bb (quarter), Eb (quarter), Bb (quarter), Eb (half). The fourth staff has a bass clef and notes: Eb (half), Bb (quarter), Eb (quarter), Bb (quarter), Eb (half). The fifth staff has a treble clef and notes: Eb (half), Bb (quarter), Eb (quarter), Bb (quarter), Eb (half). Chord symbols are written above the staves: Fm7, Bb7, Eb, Fm7, Bb7, Eb, Fm7, Bb7, Fm7, Bb7. A double bar line is followed by the text "OPT. D.S. FOR SOLOS".

CODA

Handwritten musical score for a CODA section. The score consists of four staves. The first staff has a treble clef and notes: Fm7 (half), Bb7 (quarter), Eb (quarter), Ebm7 (half). The second staff has a bass clef and notes: Fm7(b5) (half), Bb7 (quarter), Bb7 (quarter). The third staff has a treble clef and notes: Eb (half), Eb (quarter), Eb (quarter). The fourth staff has a bass clef and notes: Eb (half), Eb (quarter), Eb (quarter). Chord symbols are written above the staves: Fm7, Bb7, Eb, Ebm7, Fm7(b5), Bb7, Bb7, Eb, Eb, Eb. A double bar line is followed by the text "RHYTHM SECTION".

Delete circled bars
for 32-bar chorus for ad lib solos

Drums — Sticks (in 4)
Rhythm Section keeps playing through last 5 bars ending
on 1st beat of last bar.

Recorded by
Jimmy Giuffre (Capitol)

VERY SLOW

Handwritten musical score for "The Girl on the Train" by Rachel Watson. The score is written on ten staves, featuring various musical notations including notes, rests, and chords. Chords are labeled with letters and accidentals, such as Ab, Bbm7, Eb7, and Cm7. The notation is in a single system, with staves connected by a brace on the left. The music is in a key with three flats (B-flat major or D-flat minor) and a common time signature (C). The score includes various musical symbols like eighth notes, quarter notes, and rests, along with dynamic markings like 'p' (piano). The handwriting is in black ink on a white background.

Handwritten musical score for piano and drums. The score consists of 10 staves of music, primarily in 4/4 time. The key signature is B-flat major (two flats). The notation includes various chords, triads, and melodic lines with slurs and ties. Chord labels include Bbm7, Eb7, Ab, Db, Dø, Fm, (Maj.7), Fm7, Bb7, Bbm7, Eb7, Ab, Bbm7, Eb7, Ab, Bbm7, Eb7, Ab, Eb7, Bbm7, Eb7, Ab, Eb7, and Ab. The score concludes with a CODA section. A section labeled "OPT. D.S. FOR SOLOS" is indicated. The drum part is marked "Drums — Brushes (in 4)".

Drums — Brushes (in 4)

LAVENDER

Recorded by
Milt Bernhart (Victor)

MEDIUM

Handwritten musical score for "LAVENDER" by Jimmy Giuffre, recorded by Milt Bernhart. The score is written on ten staves in treble clef with a key signature of one flat (Bb). It includes various musical notations such as notes, rests, and bar lines, along with handwritten chord symbols above the staves. The score is divided into two main sections by a double bar line. The first section starts with a "1." marking and the second with a "2." marking. Chord symbols include G7, C, Gm7, Bb9, F, Dm7, A7, Gm7, C7, A, Am7, D7, and Bb9.

Handwritten musical notation for the first system. The first staff contains a melodic line with notes and rests, with handwritten chords *Dm7*, *G7*, *C*, and *A7* above it. The second staff contains a bass line with notes and rests, with handwritten chords *Dm7* and *G7* above it. To the right of the second staff, the text *OPT. D.S. FOR SOLOS* is written.

Handwritten musical notation for the second system. The first staff is labeled *CODA* and contains a melodic line with notes and rests, with handwritten chords *G7*, *Em7b5*, and *A7* above it. The second staff contains a bass line with notes and rests, with handwritten chords *A7*, *Dm7*, and *G7* above it. The third staff contains a bass line with notes and rests, with handwritten chords *G7* and *C* above it. To the right of the third staff, the text *Drums — Brushes (in 4)* is written.

IRANIC

By Jimmy Giuffre

Recorded by Jimmy Giuffre (Capitol)

MEDIUM BLUES

Handwritten musical notation for the third system. The first staff contains a melodic line with notes and rests, with handwritten chords *Db*, *Db*, *Db*, and *Db7* above it. The second staff contains a bass line with notes and rests, with handwritten chords *Dbm*, *Dbm*, *Db*, and *Bb7* above it. The third staff contains a bass line with notes and rests, with handwritten chords *Ebm*, *Ab7*, *Db*, *Ebm7*, *Ab7*, and *Db* above it. To the right of the third staff, the text *OPT. D.S. FOR SOLOS* is written. The fourth staff is labeled *CODA* and contains a melodic line with notes and rests, with handwritten chords *Db*, *Ab7*, *Db*, *Ebm7*, *Ab7*, *Db*, and *Ab7* above it.

Drums — Brushes (in 2)

KEEP REPEATING & GRAD. FADE

LA SONCALLI

Recorded by
Lighthouse All-Stars

(Contemporary)

MEDIUM LATIN

Handwritten musical score for "LA SONCALLI" by Jimmy Giuffre. The score is written on ten staves in treble clef with a key signature of one sharp (F#). The tempo/style is "MEDIUM LATIN". The first staff is marked with a $D7^{b5}$ chord. The second and third staves also have $D7^{b5}$ markings. The fourth and fifth staves have $Am7^{b5}$ and $D7$ markings. The sixth staff has $D7$ markings. The seventh staff has a CODA marking and a $D7^{b5}$ marking. The eighth, ninth, and tenth staves also have $D7^{b5}$ markings. The score includes various musical notations such as eighth notes, quarter notes, and beamed sixteenth notes. There are also some handwritten annotations like "OPT. D.S. FOR SOLOS" and "Drums — Sticks (Latin 4)".

Drums — Sticks (Latin 4)

SAFARI

Recorded by
Milt Bernhart (Victor)

Handwritten musical score for "Safari" by Jimmy Giuffre. The score is written on ten staves in treble clef with a key signature of one flat (Bb). It includes various musical notations such as eighth notes, quarter notes, and rests, along with handwritten chord symbols like D7, Gm, Cm7, and Bbm7. The score is divided into sections by repeat signs and includes a "CODA" section. A handwritten note "OPT. D.S. FOR SOLOS" is present. The piece concludes with a "CODA" section and a final chord of Gm.

Drums — Sticks (Beguine 4)

Rhythm section continues beguine at end, gradually fading

FOUR OTHERS (LIGHTHOUSE)

Recorded by
Lighthouse All-Stars (Contemporary)

Handwritten musical score for "Four Others (Lighthouse)". The score is written on ten staves, each with a treble clef and a key signature of one flat (B-flat). The time signature is 4/4. The music features a variety of chords, including Gm7, Cm7, F7, Bb, and G7. The notation includes eighth and sixteenth notes, rests, and dynamic markings. A double bar line with a repeat sign is present on the fourth staff. The score concludes with a CODA section on the tenth staff, marked "O.P.T. D.S. FOR SOLOS".

Chords and notation details:

- Staff 1: Gm7, Cm7, F7, Bb, Gm7
- Staff 2: F7, Bb, Gm7, Cm7, F7
- Staff 3: Cm7, F7, [1. Cm7] F7 Bb F7, [2. Cm7] F7 Bb
- Staff 4: D7, G7
- Staff 5: C7, F7
- Staff 6: Bb, Gm7, Cm7, F7, Bb, Gm7
- Staff 7: Cm7, F7, Bb, Gm7, Cm7, F7
- Staff 8: Cm7, F7, Bb, F7
- Staff 9: Cm7, F7, Bb, Cm7, F7, Bb
- Staff 10: Cm7, C#o7, Cm7, F7, Bb(b5)

CODA

O.P.T. D.S. FOR SOLOS

Drums — Sticks (in 4)

THE DUKE

Recorded by Lighthouse All-Stars
(Contemporary)

MEDIUM

Handwritten musical score for "THE DUKE" by Jimmy Giuffre, recorded by Lighthouse All-Stars. The score is written on ten staves in treble clef, with a key signature of one flat (Bb). The tempo is marked "MEDIUM". The notation includes various musical symbols such as eighth notes, quarter notes, and chords. Chord symbols are written above the staves, including Fm, Bbm7, C7, Fm, C7, Gm7(b5), C7(b5), Ab, Eb7, and CODA. There are also triplets and slurs. At the bottom right, it says "Drums — Sticks (in 2)".

BIG GIRL

Lighthouse All-Stars (Contemporary)

MEDIUM Blues

MEDIUM GIVES

A S.

(PLAY LOWER LINE 2x ONLY)

B

(PLAY TOP LINE 2x ONLY)

PLAY BOTTOM LINE 8va HIGHER 2x

CODA

[OPT D.S. FOR SOLOS]

PLAY [A] ONLY FOR SOLOS

Drums — Sticks (in(2)

A RING-TAIL MONKEY

MEDIUM BRIGHT

Handwritten musical score for "A RING-TAIL MONKEY" by Jimmy Giuffre. The score is written on ten staves, each with a key signature of three flats (Bb, Eb, Ab) and a common time signature (C). The music features a variety of chords, including Ebm7, Ab7, Db, Ebm7, Edim7, Ebmi7, Ab7 Db, F#m7, B7, E, Bbm(b9), Eb7, Fm(b5), Bbm7, and Ab7. The score includes a "CODA" section and a "D.S. For Solos" section. Handwritten notes indicate "EACH TIME EXCEPT LAST TIME" and "LAST TIME ONLY". The score is marked "MEDIUM BRIGHT" and "Drums — Brushes (in 2)".

Drums — Brushes (in 2)

SCARF DANCE

Recorded by
Milt Bernhart (Victor)MEDIUM

Handwritten musical score for "SCARF DANCE" by Jimmy Giuffrè. The score is written on ten staves in treble clef with a key signature of one sharp (F#) and a common time signature (C). The tempo is marked "MEDIUM". The score includes various musical notations such as notes, rests, and bar lines. Chord symbols are written above the staves: E7, Am7, D7, G, Bm7, E7, C#m7, F#7, B, G#m7, and Am7. A double bar line with a repeat sign is used to indicate a section that is repeated. A section starting at measure 131 is marked "131 SOLOIST TAKES BREAK HERE" and "OPT. D.S. FOR SOLOS". The score ends with a "CODA" section. The notation is handwritten and includes some corrections and annotations.

Drums — Brushes (in 4)

BALLADE

Recorded by
Milt Bernhart (Victor)

Slowly

Handwritten musical score for "Ballade" by Jimmy Giuffre. The score is written on ten staves in G major (one sharp) and 4/4 time. It includes a variety of musical notations such as eighth notes, quarter notes, and rests, along with numerous chord symbols like A^b , $A^b m7$, $D^b m7$, G^b , $E^b m7$, $C^b m7$, $F\#7$, B , $A^b m7$, $B^b m7$, E^b7 , A^b , A^b (Eb bass), $Fm7$, $B^b m7$, E^b7 , $BMAj7$, $EMAj7$, $AMAj7$, A^b , $Fm7$, $A^b m7$, $D^b m7$, G^b , $E^b m7$, $C^b m7$, $F\#7$ (sus4), B , $A^b m7$, $B^b m7$, E^b7 , A^b , $Fm7$, $Em7$, $A7$, D , $B^b m7$, $Em7$, $A7$, $A^b m7$, $D7$, $Dm7$, $G7$, C , $Cm7$, $F7$, B^b , $G7$, $C7$, $Cm7$, $F7$, $B^b m7$, E^b7 (sus4), E^b7 , A^b , $Fm7$, $A^b m7$, $D^b m7$, G^b , $E^b m7$, $Cm7$, $F7$, $B^b m7$, E^b7 (sus4), A^b , $E^b m7$, A^b7 , A^b , $B^b m7$ (b9), E^b7 (b9), A^b (b9), and A^b7 (b9). The score concludes with a CODA section and a "RIT" (ritardando) marking.

Drums — Brushes (in 4)

THE LEPRECHAUN

Recorded by
Jimmy Giuffre (Capitol)MEDIUM

Handwritten musical score for "The Leprechaun" by Jimmy Giuffre. The score is written on ten staves. The first staff begins with a treble clef, a key signature of one flat (Bb), and a common time signature (C). The music is in 4/4 time. The score includes various musical notations such as eighth notes, quarter notes, and rests. Chord symbols are written above the staves: Bb, Cm7, F7, and Bb. The score is divided into sections by brackets. The first section consists of the first eight staves. The second section, labeled "CODA", consists of the last two staves. The score ends with a double bar line and a final chord symbol of Bb. The tempo is marked "MEDIUM". The recording information "Recorded by Jimmy Giuffre (Capitol)" is at the top right. The copyright information "Copyright 1956 by CRITERION MUSIC CORP., All Rights Reserved" is at the bottom. The page number "1" is at the bottom right.

G. P. = Grand Pause

Copyright 1956 by CRITERION MUSIC CORP.,
All Rights Reserved

Drums — Brushes (in 2)

JOLLY JUMPS IN

MEDIUM BRIGHT

[illegible]

Drums — Sticks (in 4)

THE HORNS

Recorded by

Milt Bernhart (Victor)

MED IV BRIGHT

Handwritten musical score for "Coda" by Dave Brubeck. The score is written on ten staves. The first staff is labeled "Coda" and "Drums — Sticks (in 4)". The music is in 4/4 time and features a variety of chords and melodic lines. The key signature is one flat (B-flat major or D-flat minor). The score includes a section labeled "OPT. D.S. FOR SOLOS" and a final section labeled "Coda". The notation includes notes, rests, and various chord symbols such as Bbm7, Eb7, Ab, Dm7b5, G7, Cm, F7, Bb7, and Ab7(49).

Drums — Sticks (in 4)

Rhythm section continues until 1st beat of last bar

FINGER-SNAPPER

Recorded by
Jimmy Giuffre (Capitol)

MEDIUM

Eb Bb7 Eb Bb7 Eb Bb7 Fm7 Bb7
 Eb Bb7 Eb Bb7 Eb Fm7 Bb7
 Eb Bb7 Eb Bb7 Eb Bb7 Fm7 Bb7 Eb
 Fm7 B7 Bb7 Eb (Fm7 B7 Bb7 Eb)
 Eb Ebm Ebm Ebm
 Fm7(b5) Bb7 Ebm Ebm Ebm
 Fm7 Bb7 Eb Bb7 Eb Bb7
 Eb Bb7 Fm7 Bb7 Eb Fm7 Bb7 Eb Bb7
 Eb Fm7 Bb7 Eb Fm7 Bb7 Fm7 Bb7
 Fm7 Bb7 Eb Fm7 Bb7 Fm7 Bb7
 Fm7 Bb7 Fm7 Bb7 OPT. D.S. CADA FOR SOLOS

Delete circled bars
for 32-bar chorus for ad lib solos

Drums — Sticks or Brushes (in 2)

CHIRPIN' TIME

Recorded by
Jimmy Giuffre (Capitol)

MEDIUM

Handwritten musical score for "Chirpin' Time" by Jimmy Giuffre. The score is written on ten staves in treble clef, C major, 4/4 time. It features a variety of chords including A7, Dm, Em7(b5), Bb7, Dmi, Cmi, F7, and Bb. The melody is composed of eighth and quarter notes, often with slurs and accents. The piece concludes with a double bar line.

[OPT D.S. FOR SOLOS]

(KEEP REPEATING & GRADUALLY FADE)

Handwritten musical score for the solo section of "Chirpin' Time". It consists of two staves. The first staff begins with a Dm chord and a half note, followed by a Bb7 chord and a half note, then an A7 chord and a half note, and finally a Dm chord and a half note. The second staff continues the melody with various chords and notes, ending with a double bar line.

Drums — Brushes (in 2)

ONE SCORE & 8 HORNS AGO

Recorded by
Hal McKusick (Victor)MEDIUM

Handwritten musical score for "ONE SCORE & 8 HORNS AGO" by Jimmy Giuffre. The score is written on ten staves. It begins with a treble clef and a common time signature. The first staff has a box labeled 'A' and a key signature change to B-flat major (Bbm). The score includes various musical notations such as eighth notes, quarter notes, and rests. Chord symbols are written above the staves, including Bbm (F Bass), Cm7(b5), F7, and Ebm. There are also handwritten notes like '3bm (F Bass)' and '1. Bbm F7' followed by '2. Bbm'. The score ends with a section labeled 'CODA' and a key signature change to B-flat major (Bbm). A handwritten note 'OPT. DS. FOR SOLOS' is written on the right side of the score.

Drums — Sticks (in 2)

Band plays (A) as interlude after 1st chorus
and soloists play (B) only.

In (A) and Coda the rhythm section plays on 2 & 4 only,
leaving 1 & 3 silent in each bar.

Recorded by
Lighthouse All-Stars (Contemporary)

Recorded by
Lighthouse All-Stars (Contemporary)

MEDIUM

Handwritten musical score for "Light House All Stars (Contemporary)". The score is written on ten staves. It includes various musical notations such as treble and bass clefs, time signatures, key signatures (one flat), and a variety of chords including F7, Bbm7, Eb7, Cm7, Ab7, Dm7, G7, and Bbm7(b5). The score features several triplet markings (indicated by a '3' over a group of notes) and dynamic markings like 'p' (piano) and 'f' (forte). A section labeled "CODA" appears towards the end. The piece concludes with a double bar line and a final chord of Ab. A legend at the bottom right indicates "Drums — Brushes (in 4)".

Drums — Brushes (in 4)